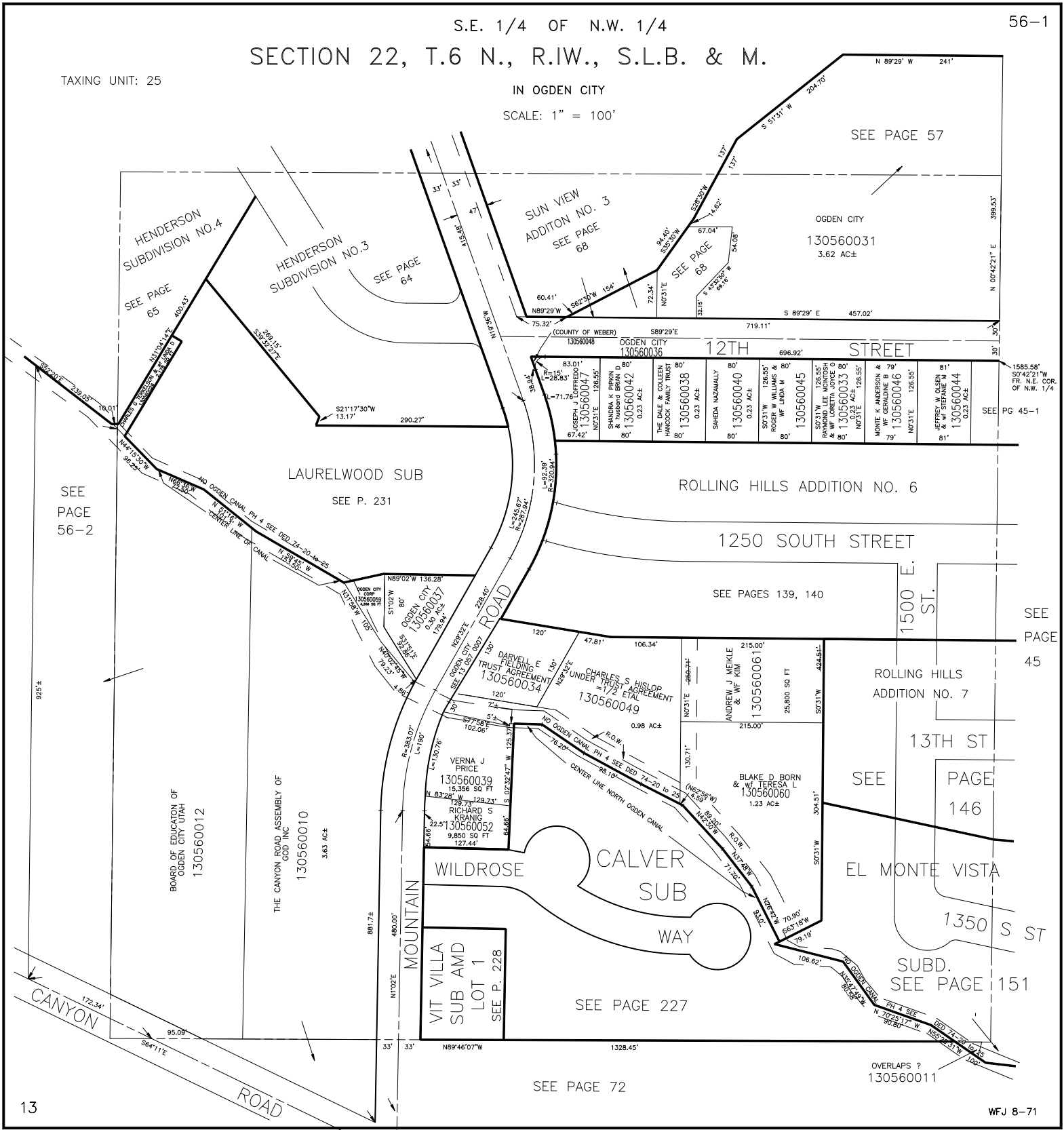


S.E. 1/4 OF N.W. 1/4
SECTION 22, T.6 N., R.1W., S.L.B. & M.

TAXING UNIT: 25

IN OGDEN CITY
SCALE: 1" = 100'



SEE PAGE 56-2

HENDERSON SUBDIVISION NO. 4
SEE PAGE 65

HENDERSON SUBDIVISION NO. 3
SEE PAGE 64

SUN VIEW ADDITION NO. 3
SEE PAGE 68

SEE PAGE 57

OGDEN CITY
130560031
3.62 AC±

LAURELWOOD SUB
SEE P. 231

ROLLING HILLS ADDITION NO. 6

1250 SOUTH STREET

SEE PAGES 139, 140

1500 E. ST.

SEE PAGE 45

ROLLING HILLS ADDITION NO. 7

13TH ST

SEE PAGE 146

EL MONTE VISTA

1350 S ST

SUBD. SEE PAGE 151

WILDROSE

CALVER SUB

WAY

VIT VILLA SUB AMD LOT 1
SEE P. 228

SEE PAGE 227

SEE PAGE 72

OVERLAPS ?
130560011